

Reconnaissance Offshore Sand Search

[New Users](#) | [Guest Book](#) | [Related Links](#) | [Contact Us](#) | [FTP](#)

Interactive Mapping

Internet Map Services

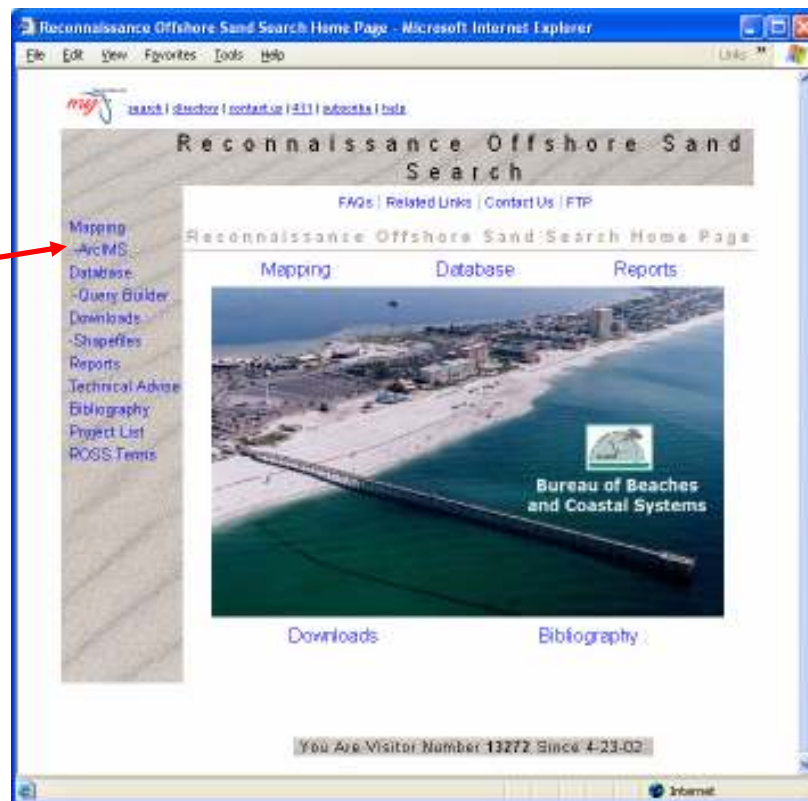
What does an Internet Map Service do?

An Internet Map Service (IMS) displays a map image based on an underlying database of spatial information. The map service allows the user to interact with the map display and query the underlying spatial data. The technology used to coordinate the database and map display is ArcIMS. More information on ArcIMS can be found on the web at <http://www.esri.com/software/arcims>.

Creating an Interactive Map

First you need to get to the Interactive Mapping page.

Click on the link titled 'ArcIMS' on the navigation bar of the BCS Reconnaissance Offshore Sand Search web page.



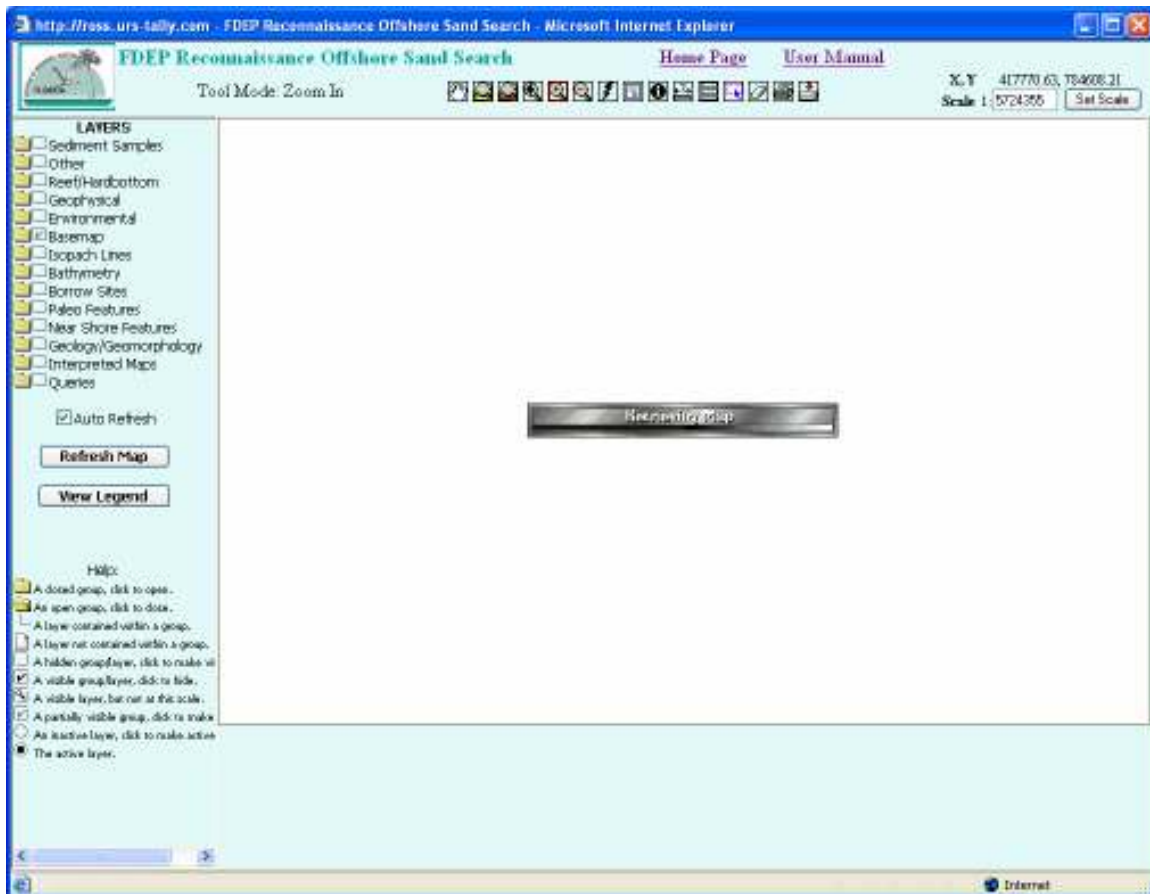
You should now see the Interactive Mapping page in a new browser window. From this page you can use a variety of tools to navigate the map and query the underlying data.

The map image displays the full extent of the spatial data contained in the database. You may navigate through any part of the map shown in this initial extent. Below the map is an area for displaying responses from the database to your requests.

Reconnaissance Offshore Sand Search

[New Users](#) | [Guest Book](#) | [Related Links](#) | [Contact Us](#) | [FTP](#)

When you make requests of the map service, a response to your request is generated by the server and sent to your browser for display. The response may be a new map or the results of a query for tabular information. A response may take anywhere from a few seconds to a couple of minutes to process, depending on its complexity. During this processing time, the ArcIMS map viewer will be in Retrieving mode, preventing it from producing further requests until a reply from the server is received.



Navigating an Interactive Map

The interactive map page has a variety of tools for manipulating the map and querying the underlying spatial data. Here is a general overview of the Interactive Map page.

Reconnaissance Offshore Sand Search

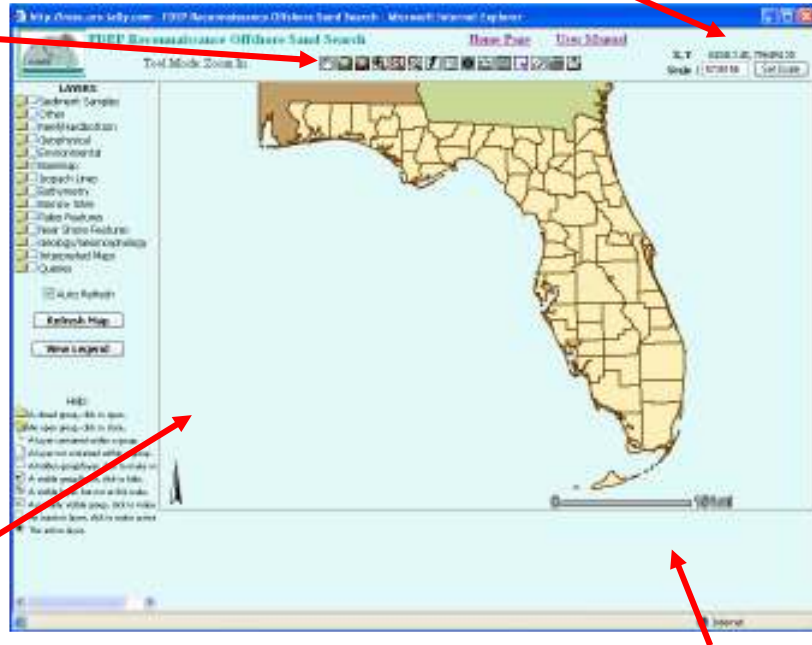
[New Users](#) | [Guest Book](#) | [Related Links](#) | [Contact Us](#) | [FTP](#)

Across the top of the interactive map is a toolbar that includes tools for navigating, querying, and printing. A tool mode message next to the tool bar indicates the currently selected tool.

As the mouse cursor moves over the map, the map coordinates under the cursor are displayed in the top right frame, along with the current reference scale.

Appearing in the left-hand frame is the Table of Contents (TOC).

The map frame displays the interactive map.



The results frame below the map displays the records associated with the results of queries and selections, as well as various messages.

Next we will examine in detail the various frames that make up the interactive mapping website.

Reconnaissance Offshore Sand Search

[New Users](#) | [Guest Book](#) | [Related Links](#) | [Contact Us](#) | [FTP](#)

Table of Contents Frame

The Table of Contents (TOC) contains a list of all the data sets, or layers, that can be viewed and queried in the ROSS database. The data sets and queries are organized in category folders.

The first section of the TOC is the Layer List, which displays all of the spatial data sets that are potentially visible.

Each of the category folders contains a list of layers. Next to the folder icon is a check box for making all of the layers in the folder visible.

Each layer name appears next to a check box and radio button. The check box indicates if the layer is currently visible on the map, and the radio button indicates if the layer is activated for use with the query, select, and identify tools.

A magnifying glass symbol in the checkbox lets you know that the layer is not visible at the present scale. To improve performance by reducing the map drawing speed, some very detailed layers can only be displayed when the map area is small.

Below the Layer List is the Refresh Map and View Legend buttons. Use the Refresh Map buttons to apply changes to the visible layers. The View Legend button loads a map legend that shows the meaning of all the symbols in the map.

At the bottom of the frame is a Help section that describes all of the icons used in the TOC.

http://ross.urs-tally.com

FDEP Reconnaissance Offshore Sand Search

FLORIDA

TOC

LAYERS

- Sediment Samples
- Other
- Reef/Hardbottom
- Geophysical
- Environmental
- Basemap
 - Ship Ports
 - Major Rivers (Lines)
 - Aquatic Preserve Bounc
 - Counties
 - Florida Coastline
- Isopach Lines
- Bathymetry
- Borrow Sites
- Paleo Features
- Near Shore Features
- Geology/Geomorphology
- Interpreted Maps
- Queries

Auto Refresh

Refresh Map

View Legend

Help:

- A closed group, click to open.
- An open group, click to close.
- A layer contained within a group.
- A layer not contained within a group.
- A hidden group/layer, click to make visible.
- A visible group/layer, click to hide.
- A visible layer, but not at this scale.
- A partially visible group, click to make visible.
- An inactive layer, click to make active.
- The active layer.

Reconnaissance Offshore Sand Search

[New Users](#) | [Guest Book](#) | [Related Links](#) | [Contact Us](#) | [FTP](#)

Results Frame

The Results Frame is the area below the map image that is used to display several kinds of textual information, such as:

- Diagnostic messages
- Tabular results from identifying, selecting, and querying features
- Forms for user input
- Hyperlinks to related documents

Below is a screen capture of the results from a selection by rectangle on the All Sand Samples layer. The Select By Rectangle tool is described in detail in the Toolbar Frame section.

Each record has a number that can be used to highlight the feature on the map.

Use the 'Zoom to these records' link to focus the map on the results of the selection.

Identify, query, and selection results records are displayed in the results frame in sets of 25; If there are more than 25 records, a link below the records retrieves the next/previous 25 records.

| | | | | | | |
|--------------------|------|---|--|--|--|--|
| 20 | 1732 | 6 | | | | |
| 21 | 1733 | 6 | | | | |
| 22 | 1734 | 6 | | | | |
| 23 | 1735 | 6 | | | | |
| 24 | 1736 | 6 | | | | |
| 25 | 1737 | 6 | | | | |

[More Records](#) [Zoom to these records](#) [View Enhanced Query Results](#) [Analyze these records](#)

Features from any of the Sand Samples layers can be analyzed in more depth once they are identified, selected, or returned by a query. See the section on Additional Tools for more details.

Toolbar Frame

The toolbar buttons that appear near the top of the window are used to navigate around the map and query the database for more information about the visible features on the map.

Important Notes:

- Many tools are dependent on whether or not a layer is Visible and/or Active. To make layers visible, check the box next to the layer name, and then click the Refresh Map button at the bottom of the TOC. To make a layer active, click the radio button next to the layer name. Only one layer can be active at a time.
- Tool icons with a red outline are persistent, which means these tools remain enabled until another tool is selected. The name for the currently enabled tool, or Tool Mode, is displayed to the left of the toolbar. When the map page first loads, the Zoom In tool is automatically selected.

Next is a description of how each toolbar button operates.



Pan: Select the pan tool, and then hold the mouse cursor over any part of the map. The mouse cursor will appear as a pair of arrows. By clicking and holding down the left mouse button, you can drag the map image around the map frame. Release the mouse button to re-center the map in a new position.



Zoom to Full Extent: Clicking this button returns the map image to the initial statewide view of Florida.



Zoom to Active Layer: Each spatial data set occupies some region, or extent, on the map. For example, potential borrow areas have been identified off the Florida Panhandle. Clicking the Zoom to Active Layer button will produce the map with the smallest scale at which the selected layer is entirely visible.



Back to Last Extent: This tool returns the map to the previous spatial extent and scale. This button will cycle back through all of the map images that have been viewed, ending with the statewide view of Florida.




Zoom In: There are two ways to use this tool to zoom in on the map:


- **Zoom to Point:** Click anywhere on the map image to re-center the view on that point, and zoom in by a factor of two.
- **Zoom to Box:** Use this mode to define a rectangular region to zoom in on. Hold the mouse cursor over the map image at the top left corner of the new viewing rectangle. Click and hold down the left mouse button, then drag the cursor across the map to


Reconnaissance Offshore Sand Search


[New Users](#) | [Guest Book](#) | [Related Links](#) | [Contact Us](#) | [FTP](#)


create a zoom box. Release the mouse button to complete the rectangle and produce a new map image.


-  **Zoom Out:** This button works similarly to the Zoom In tool, allowing you instead to zoom out.

-  **Hyperlink:** The hyperlink tool allows you to view documents related to features in some designated layers on the map. There are currently two layers with hyperlinks, Core Locations and Data Buoys. One of these layers must be visible and active to use this tool.
 - *Core Locations:* Select the hyperlink tool, and then click on any core location (represented by an orange dot). If there are core logs or photos for that core location, links to these documents will be presented below the map. Click on the links to open these documents.
 - *Data Buoys:* Select the hyperlink tool, and then click on the data buoy location (represented by a yellow triangle). If available, a link to the National Data Buoy Center website for the selected buoy will be presented below the map. Click on the link to open the web page containing statistics for the selected buoy.

-  **View Metadata:** This button opens a document describing in detail the currently active layer. This document, referred to as the metadata, is presented in Federal Geographic Data Committee (FGDC) format. The information in the metadata file includes a general description of the data set, a description of all the attribute columns that are associated with the data set features, and information about the data set's spatial projection, just to name a few of the available items.

-  **Identify:** More than just graphics, features on the map are related to a database record of attribute information. This information can be displayed by using the Identify tool. Any visible map features that are part of the currently active layer can be identified by selecting the identify tool and clicking on a map feature that belongs to the active layer. The database record for that feature will be retrieved and displayed in below the map.

-  **Measure:** The measure tool is used to determine the distance along a line segment or series of connected line segments, or path. Select the Measure tool and click once on the map to create a starting point. A new map image will be retrieved showing this starting point. On the new map, click again to mark the ending point of the line segment. A new map will again be retrieved showing the line segment. Continue this process of adding points to create a path. Near the top of the map are two boxes showing the length of the current path, as well as the distance from the last point added to the position of the mouse cursor. The current path may be cleared at any time using the Clear Selection tool, described below.

-  **Set Units:** The map units can be changed to feet, miles, meters, or kilometers by selecting this tool and completing the Set Units dialog that appears. A drop-down menu

Reconnaissance Offshore Sand Search

[New Users](#) | [Guest Book](#) | [Related Links](#) | [Contact Us](#) | [FTP](#)

provides the various options for units, and a submit button is provided to apply the changes to the map display units.



Enhanced Query: Use this tool to select points from any of the Sand Samples layers and send the area of interest to the advanced Query Builder. The advanced Query Builder can be used to refine the query, sort the results, and download them for further study. See the section on Additional Tools for more information.



Clear Selection: This button clears the current selected features and compound select areas from the map image, resets the measure tool, and clears any buffers from the map.



Print: Opens the print dialog for printing the current map image. A title can be added before creating the print page. The print page opens in a new browser window, and the File menu of the new window may be used to print the map image.



FTP link: Opens the Regional Offshore Sand Search FTP site in a separate browser window. The FTP site contains the seismic images and GIS shape files for download.

Reconnaissance Offshore Sand Search

[New Users](#) | [Guest Book](#) | [Related Links](#) | [Contact Us](#) | [FTP](#)

Additional Tools

Enhanced Query

The results from selecting by rectangle or querying can be viewed in the Interactive Query Builder portion of the Sand Search website.

Select the enhanced query tool and draw a rectangle around features of interest on the map. Make sure the sand samples layer you want to query is visible and active.

-OR-

Identify, select, or query any Sand Sample layer, as described in the Toolbar Frame section. Click on the 'View Enhanced Query Results' Link that appears below the table in the Results Frame.

